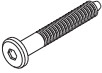


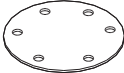

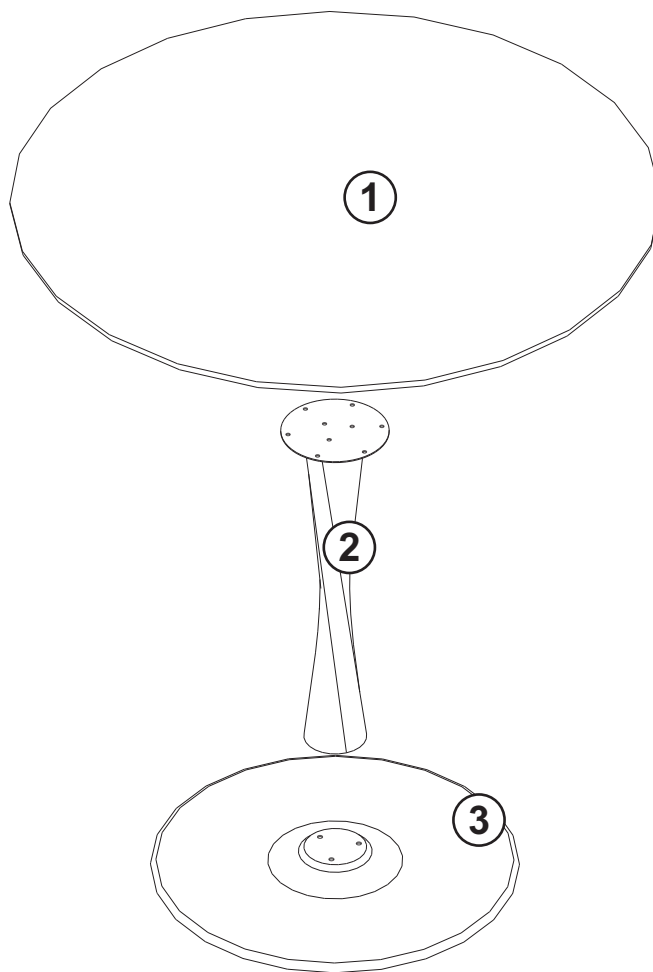
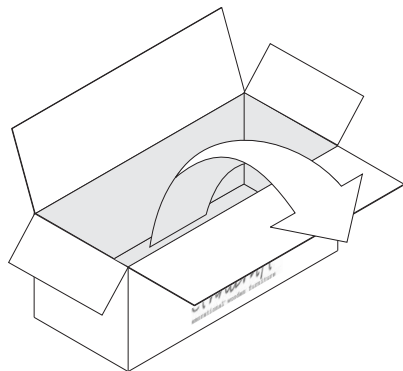
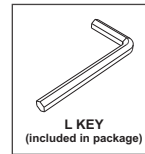


## 50012 OAK TORSION DINING TABLE ASSEMBLY INSTRUCTION FOR TABLE INSTALLATION

### HARDWARE ENCLOSED

				
JCBC SCREW M8x80 (3X)	JCBC SCREW M8x16 (9X)	METAL PLATE (SMALL) (1X)	METAL PLATE (LARGE) (1X)	RUBBER PAD (6X)

### TOOL



### IN YOUR PACKAGE :

ASSEMBLY INSTRUCTION  
HARDWARES (AS LISTED ABOVE)

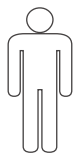
### PARTS TO BE INSTALLED

1. TABLE TOP 1 pc
2. CENTER LEG 1 pc
3. LEG BASE 1pc

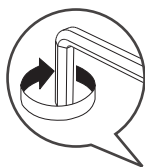
### SYMBOLS



DIRECTION

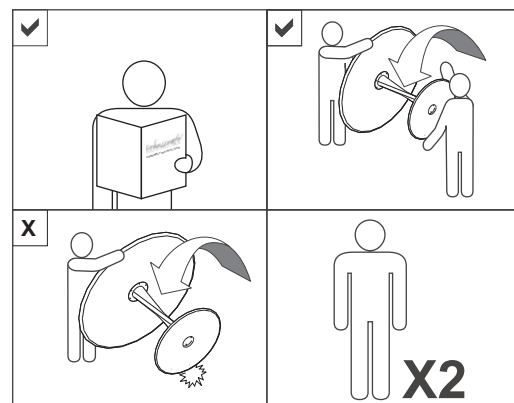


NUMBER OF  
PERSONS NEEDED



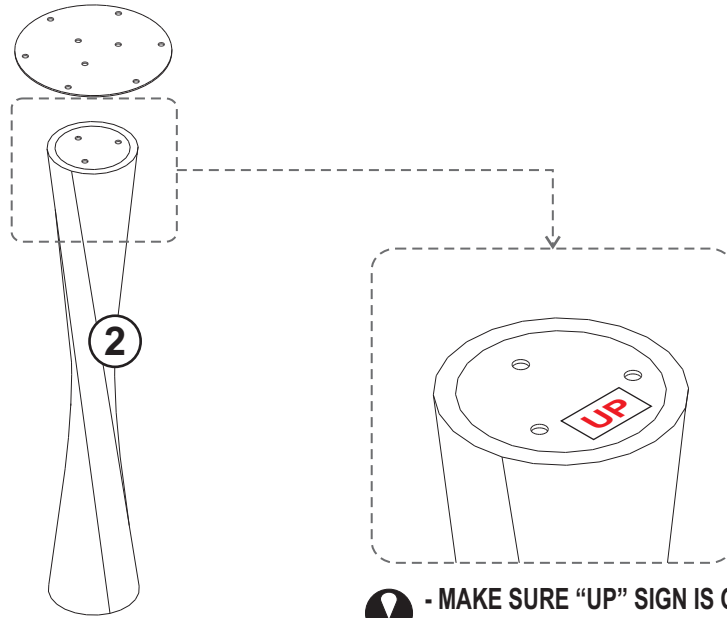
USE L KEY  
TO TIGHTEN

### NOTICE

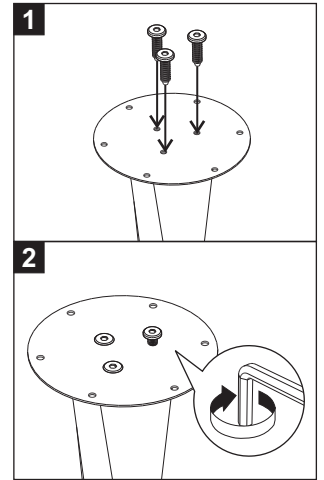


## 50012 OAK TORSION DINING TABLE ASSEMBLY INSTRUCTION FOR TABLE INSTALLATION

### A INSTALLING METAL PLATE TO THE CENTER LEG

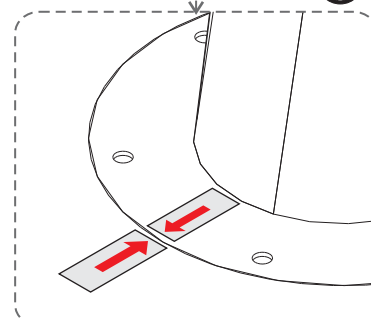
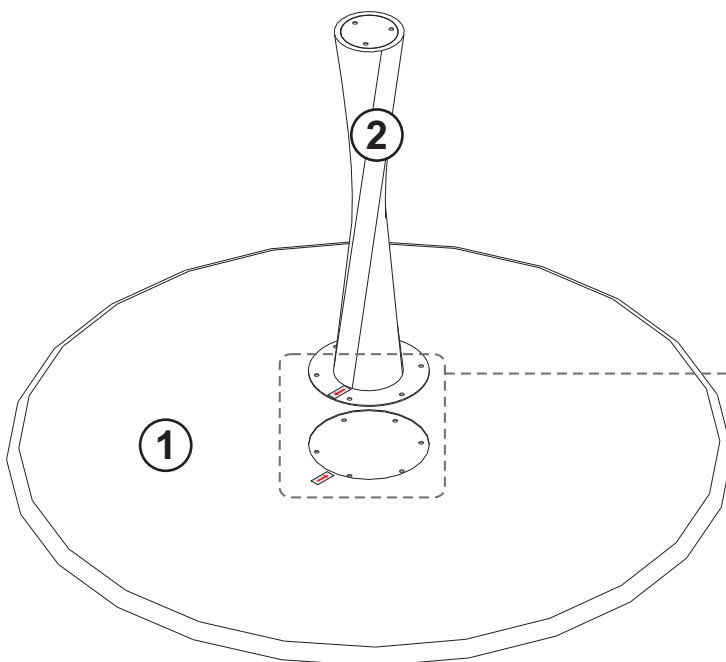


- ! - MAKE SURE "UP" SIGN IS ON TOP / ABOVE
- USE THE SCREW M8x16

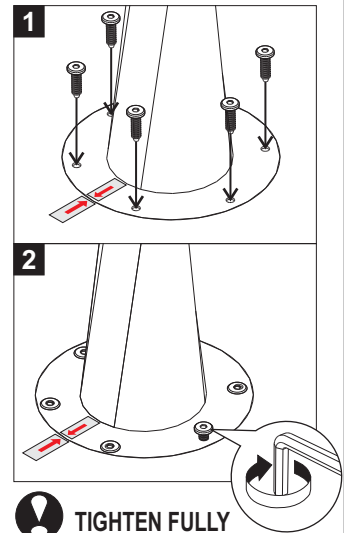


- ! TIGHTEN FULLY

### B INSTALLING CENTER LEG TO TOP TABLE



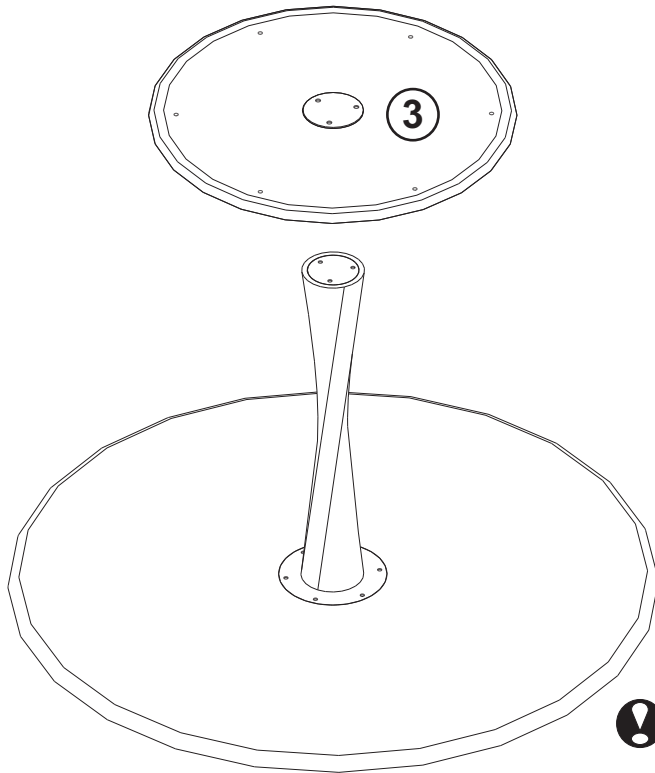
- ! - ALWAYS REFER THE STICKER
- USE THE SCREW M8x16



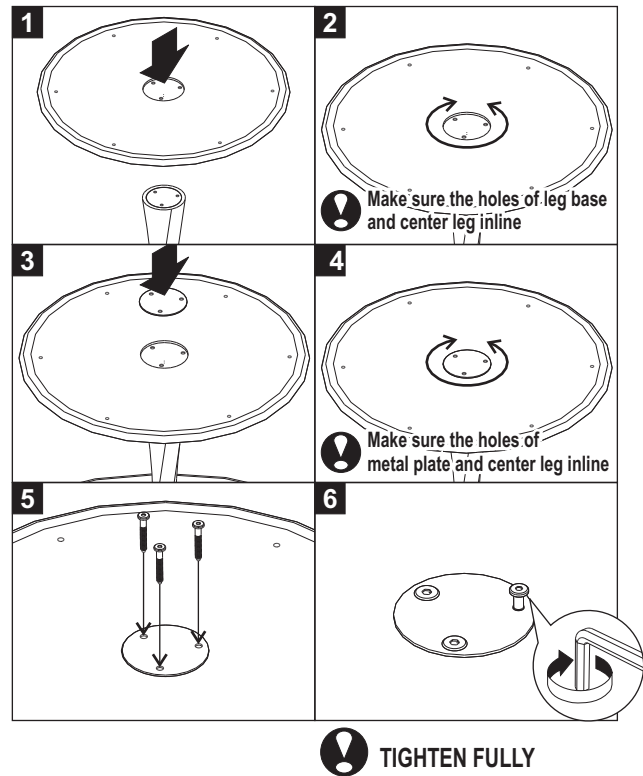
- ! TIGHTEN FULLY

## 50012 OAK TORSION DINING TABLE ASSEMBLY INSTRUCTION FOR TABLE INSTALLATION

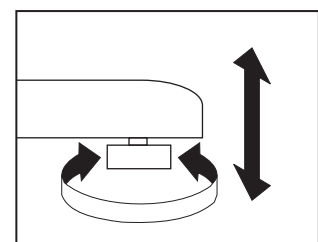
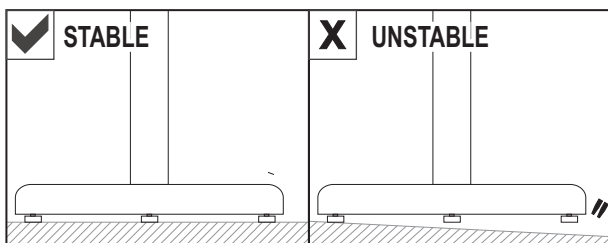
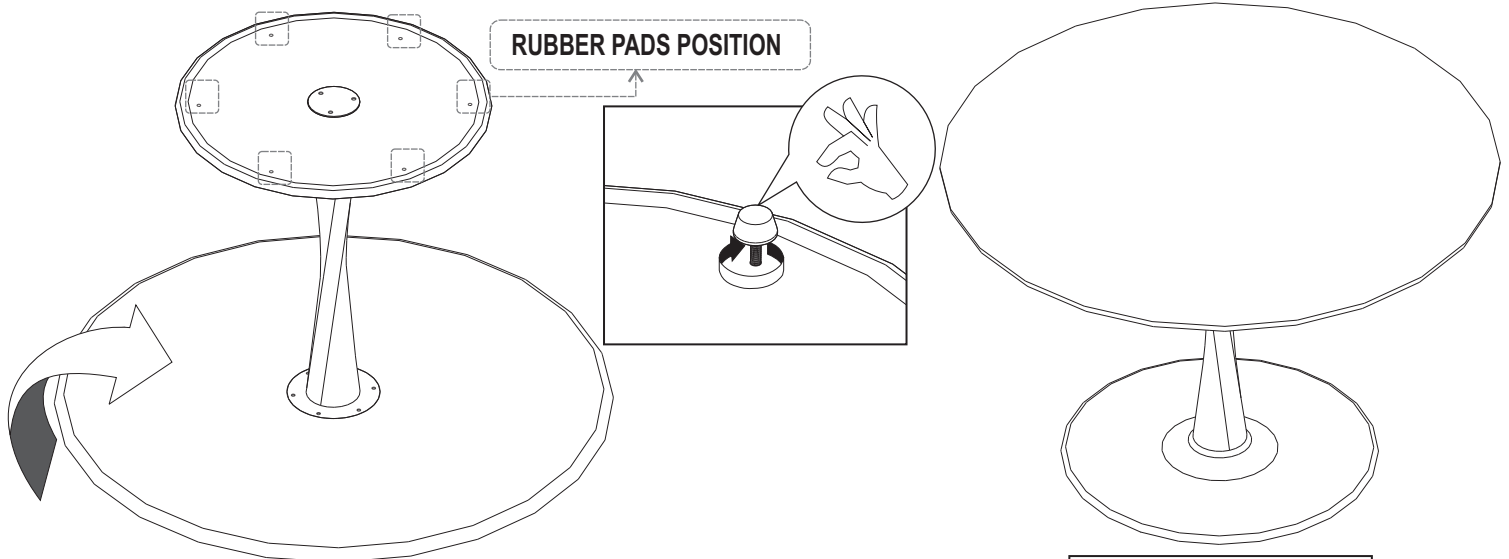
### C INSTALLING LEG BASE



⚠ USE THE SCREW M8x80



### D INSTALL AND ADJUST RUBBER PAD



**NOTE :**  
THIS IS A COMPULSORY ACTION TO MAKE SURE ALL OF THE RUBBER PADS TOUCH THE GROUND!